



QUICK-SEARCH
YG-1 PRODUCTS!!
www.yg1.kr



INSERT HIGHLIGHT

 **YG-1 CO., LTD.**

HEAD OFFICE

211, Sewolcheon-ro, Bupyeong-gu, Incheon, South Korea

Phone : +82-32-526-0909

E-mail : yg1@yg1.kr

www.yg1.kr

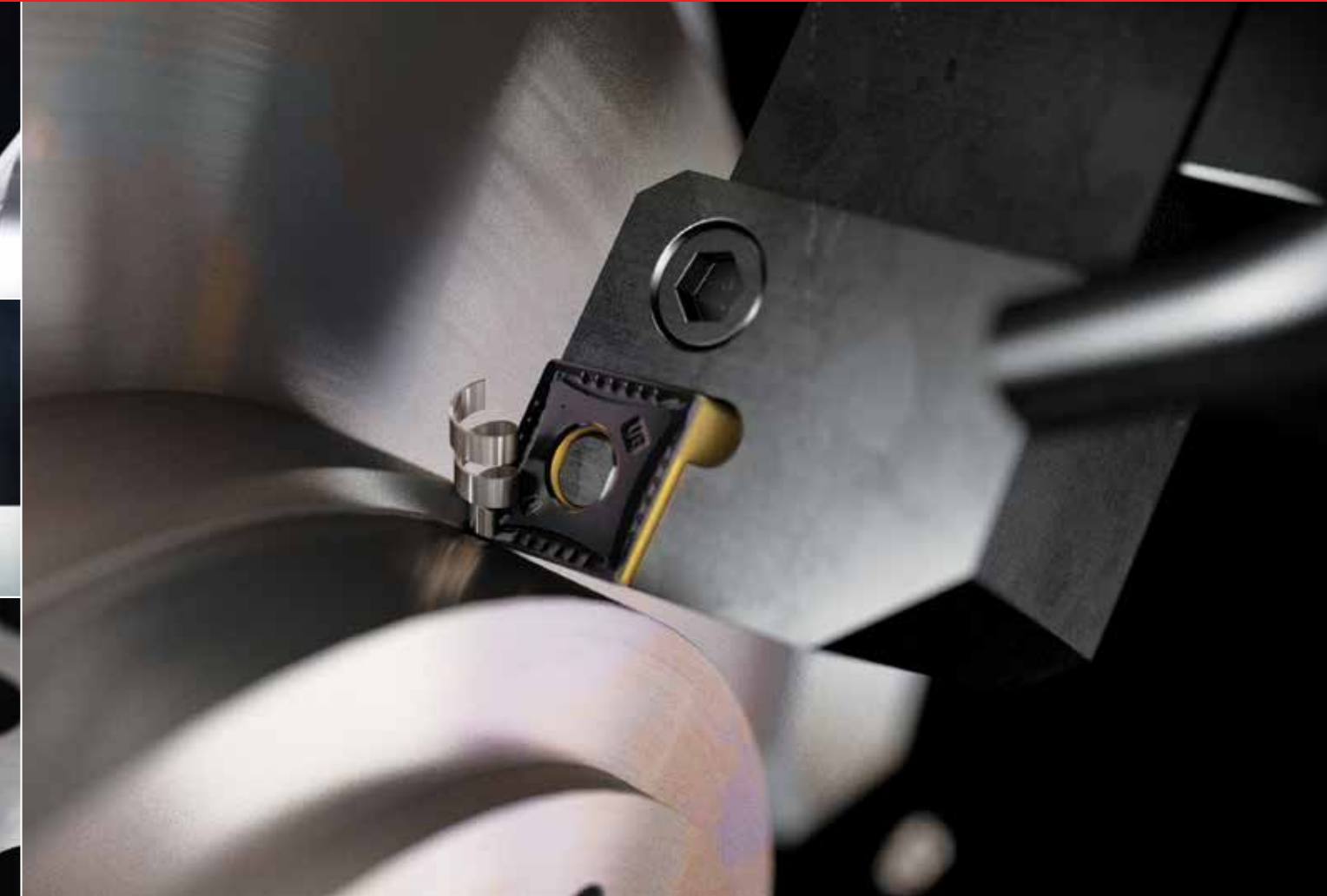
Note The new address above has currently been updated to the new Korean postal standard valid since 2014.
Notice that the physical Head Office location did NOT change.



Search 'YG-1' on social media outlets

Tool specifications are subject to change without prior notice.

YG1IHT181015002



Wheel Bearing for Automotive Industry

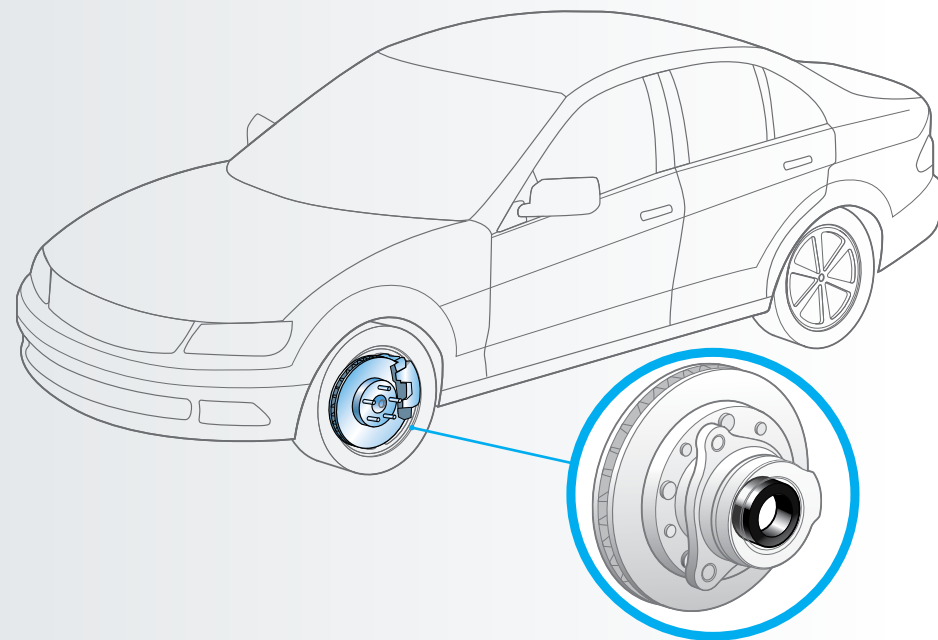


Low Alloy Steel

AISI 4140

JIS SCM440

DIN 42CrMo4



CNMG 120408-UM, YG3020
(CNMG 432-UM, YG3020)

Vc 350 m/min
(1150 ft/min)

F_n 0.25 mm/rev
(.01 in/rev)

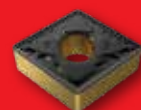
A_p 1 mm
(.04 in)

Tool
life

↑ 83%

110 pcs

YG
YG3020



60 pcs

Competitor
P25 grade

Steel Grades

Hardness
Toughness

YG1001 **High Wear Resistance grade**
• Provides longer tool life in stable application

YG3010 **First choice for Finishing Steels, and Ductile Cast iron**
• Finishing and light machining of steel under stable condition

YG3020 **First Choice grade for general Steel application**
• Substrate especially designed for good toughness

YG3030 **Interrupted cutting of steel and stainless steel**
• for heavy roughing in mild steel and low carbon alloy steel

Chipbreakers

Finishing
Roughing

UF For Finishing

UL Semi-Finishing and Sticky Materials

MM Low Carbon Steel

UM Medium (for Unstable Condition)

UG Medium (for Stable Condition)

UC Medium Roughing

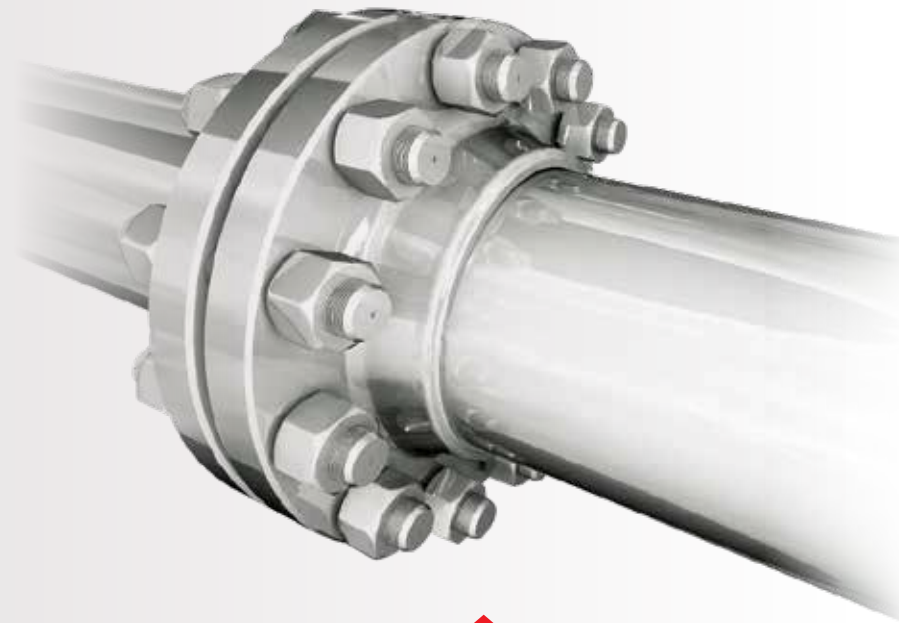
UR Roughing and Heavy Interrupted Cut

YGTURN for Stainless Steel **M**

Flange for Pipe



Austenitic Stainless Steel
 AISI 316
 JIS SUS316
 DIN 1.4401



CNMG 120408-MM,YG211
(CNMG 432-MM,YG211)

Vc 200 m/min
 (660 ft/min)

Fn 0.15 mm/rev
 (.006 in/rev)

Ap 1.2 mm
 (.05 in)

Tool life

↑ 20%

60 pcs

YG
YG211



50 pcs

Competitor
 M10 grade

Stainless Steel Grades



YG211 **PVD Grade for Stainless Steel and Super Alloy**
 • For continuous cutting and general machining

YG3030 **Interrupted cutting of steel and stainless steel**
 • for heavy roughing in mild steel and low carbon alloy steel

Chipbreakers



MF Finishing **Coming Soon**



MM Medium



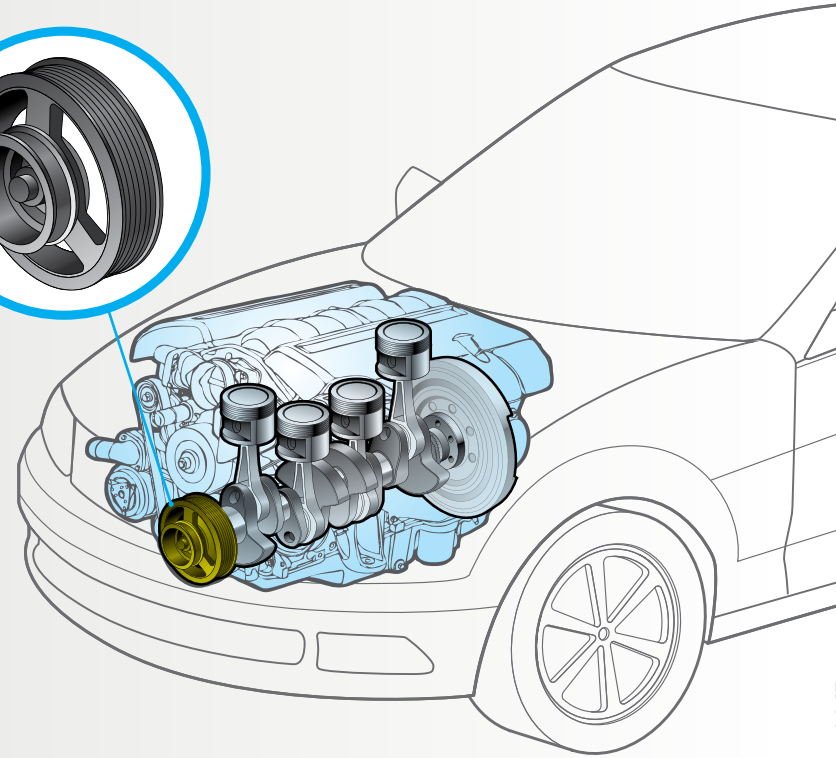
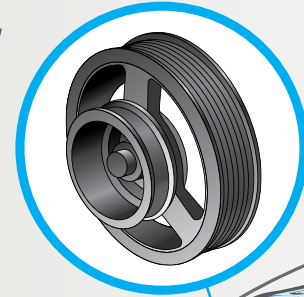
MR Roughing **Coming Soon**

YGTURN for Cast Iron **K**

Damper Pulley for Automotive Industry



Grey Cast Iron
ASTM A48-40B
JIS FC250
DIN GG25



CNMG 120408-UC,YG1001
(CNMG 432-UC,YG1001)

Vc 570 m/min
(1870 ft/min)

Fn 0.3 mm/rev
(.012 in/rev)

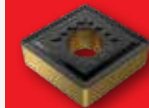
Ap 2 mm
(.08 in)

Tool
life

↑ 60%

240 pcs

YG
YG1001



150 pcs

Competitor
K10 grade

Cast Iron Grades



YG1001 First choice for stable machining of cast iron
• Substrate especially designed for high wear resistance

YG3010 First choice for Ductile Cast iron
• Increased wear resistance and chipping resistance

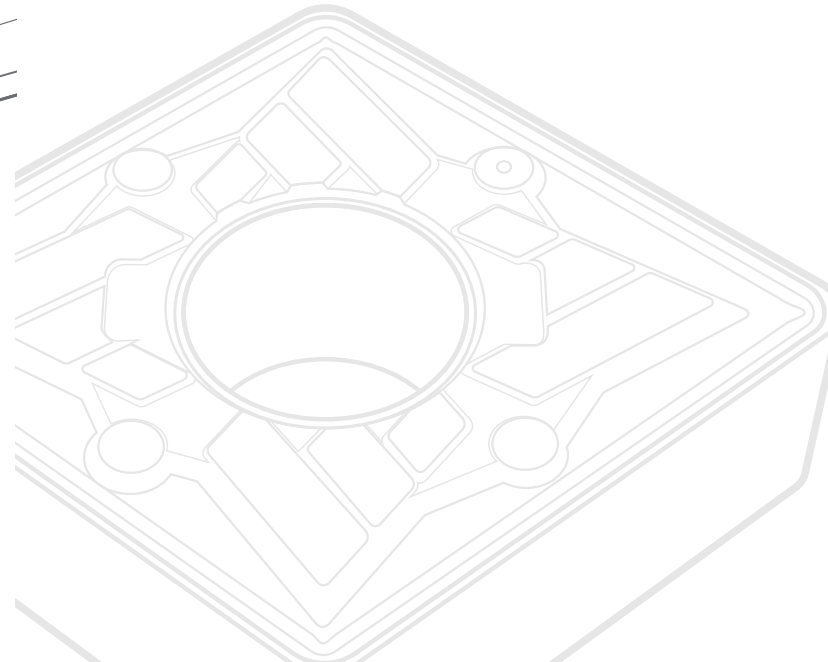
Chipbreakers



UC Medium Roughing

UR Roughing and Heavy Interrupted Cut

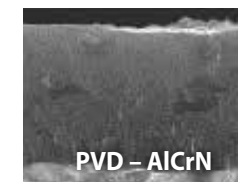
..MA Cast Iron Heavy Roughing



YG622 High Alloy Steel Milling Grade

P20 - P40

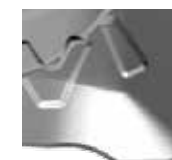
M20 - M40



PVD - AlCrN

- for High alloy Steel and Cast Iron
- Combination of High Hardness coating and Tough Substrate
- First choice grade for Mold & Die segment

-TR New Chipbreaker for heavy duty application



General
Insert



New -TR
Chipbreaker

- Reinforced edge design
- First choice grade for tough application



APKT-TR
16



RDKT-TR
08/10/12

High Alloyed Steel

AISI H13
JIS SKD61
DIN 1.2344

RDKT 1204M0 -TR, YG622

Vc 332 m/min
(1090 ft/min)
Fz 0.47 mm/tooth
(.019 in/tooth)
Ap 0.7 mm
(.03 in)

↑ 50%

90 pcs

**YG
YG622**

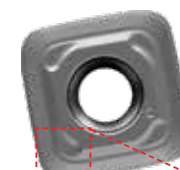


Tool
life

60 pcs
Competitor



SDMT Series



- High feed milling series
- 4 corner positive insert
- APMX 1.8mm
- Flat Wiper to improve surface finish

Chipbreakers



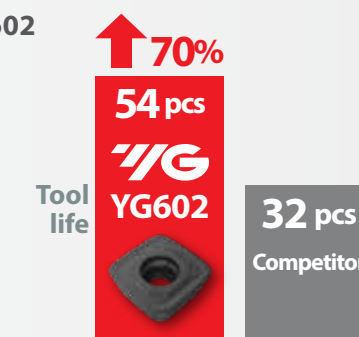
SDMT-ST
General Chipbreaker
Lower cutting force



SDMW
Heavy Duty Application
Strong edge provides high toughness

**Austenitic
Stainless Steel**
AISI 630
JIS SUS630
DIN 1.4542

SDMT 120420 -ST, YG602
Vc 120 m/min
(400 ft/min)
Fz 0.9 mm/tooth
(.035 in/tooth)
Ap 1 mm
(.04 in)





WCMX Series



- 3 Corner Indexable Drilling Insert
- 4 insert sizes covering D21~52
- General Type with Good compatibility

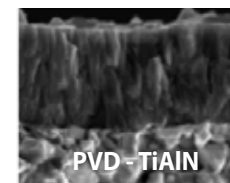
YG602 Drilling Grade

P20 - P35

M20 - M40

K20 - K40

S15 - S25



Universal grade for General Drilling Application

- Ultra Dense PVD Coating with optimal thermal resistance & strength
- Sub-Micron substrate designed for demanding applications

Low Alloy Steel

AISI 1045

JIS S45C

DIN C45E

WCMX 06T308, YG602

Vc 120 m/min
(400 ft/min)

Fz 0.12 mm/tooth
(.005 in/tooth)

↑ 50%

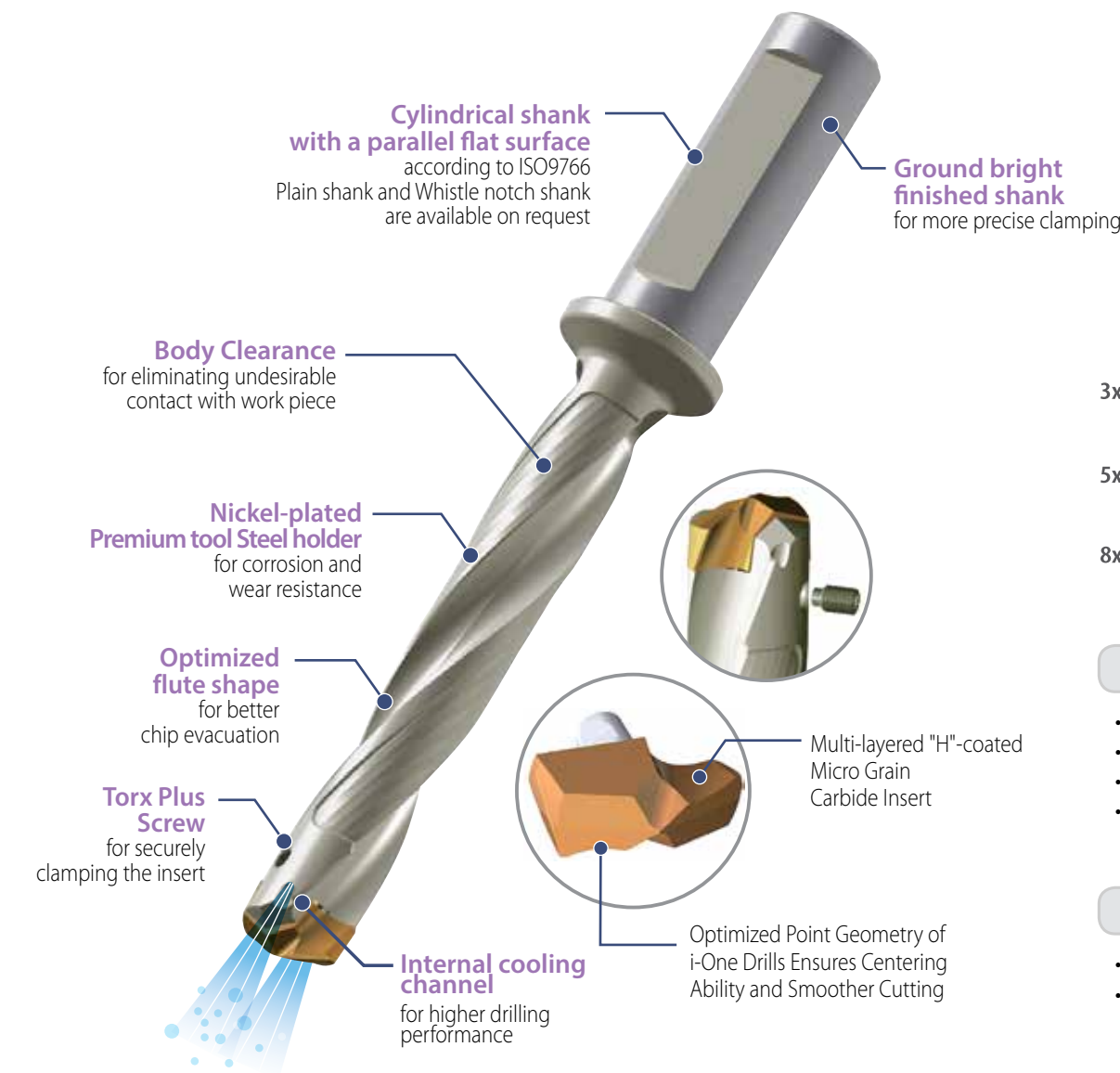
15 pcs

**YG
YG602**



Tool
life

10 pcs
Competitor



FEATURES & BENEFITS

- For Carbon Steels, Alloy Steels and Cast Iron
- Secure and quick clamping system
- High performance with Cost efficiency
- Multi-layered coating delivers outstanding productivity and reliability

RANGE

- Ø 10mm - Ø 33.73mm (0.3937-1.3281")
- Holder Length: 3XD, 5XD, 8XD